

# MONTHLY MEMBERSHIP PROGRESS REPORT

LOCATION MISSISSIPPI

District 30 S

Results as of: 2/28/2023

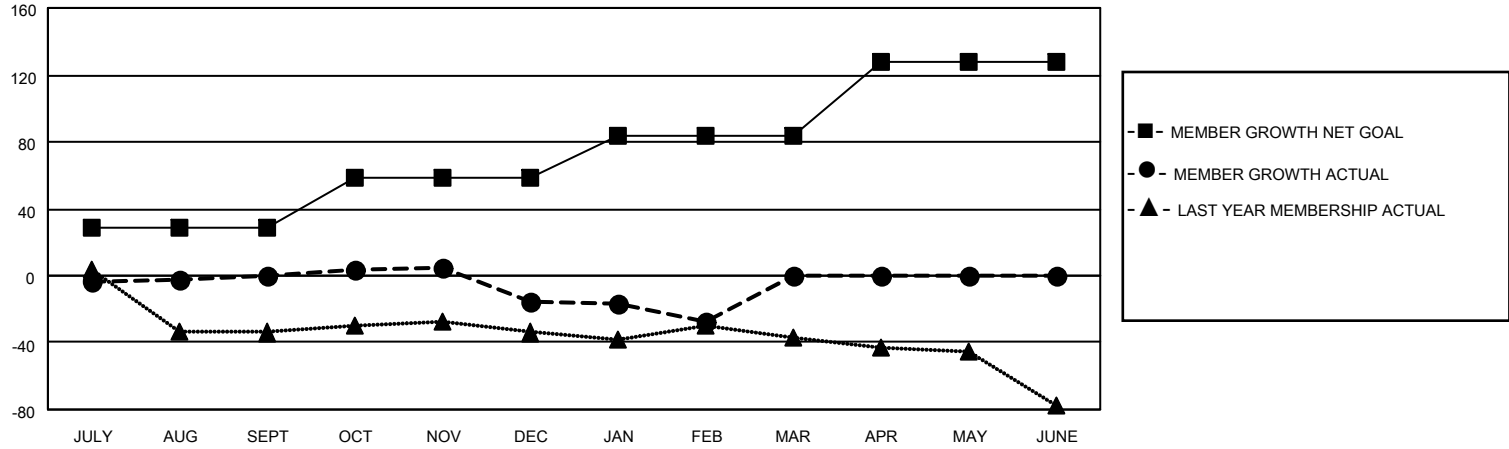
Clubs			
RESULTS FOR 2022-2023			
QUARTER	NEW CLUB GOAL	NEW CLUBS	DROPPED CLUBS
JULY/AUG/SEPT	0	0	0
OCT/NOV/DEC	0	0	1
JAN/FEB/MAR	0	0	0
APR/MAY/JUNE	0	0	0

Members			
RESULTS FOR 2022-2023			
QUARTER	MEMBER GROWTH NET GOAL	MEMBER GROWTH ACTUAL	DROPPED MEMBERS ACTUAL (including transfers)
JULY/AUG/SEPT	29	25	24
OCT/NOV/DEC	29	21	37
JAN/FEB/MAR	26	21	27
APR/MAY/JUNE	44	0	0

**GOALS AND ACTUAL NEW CLUBS CUMULATIVE**



**GOALS AND ACTUAL MEMBERS CUMULATIVE**



DROPPED CLUBS: 1	
<b>DROPPED MEMBERS</b>	
DECEASED	7
CLUB CANCELLED	11
OTHER	70
<b>TOTAL</b>	<b>88</b>

21 CLUBS OF 39 ADDED 1 OR MORE NEW MEMBERS

[CLICK HERE FOR CUMULATIVE MEMBERSHIP DATA](#)

<u>GENDER DISTRIBUTION</u>	
MALE	530 (69.19%)
FEMALE	236 (30.81%)
NON BINARY	0 (0.00%)
PREFER NOT TO ANSWER	0 (0.00%)
<b>TOTAL FAMILY UNIT MEMBERS</b>	<b>72</b>
<b>FAMILY MEMBERS PAYING HALF DUES</b>	<b>36</b>